

W.P. 10

« Cryostat Integration Tests »

in CryHoLab

CryHoLab involvement (CARE)

JRA1 (SRF)

9 cells 1.3 GHz $\beta = 1$

WP 8 (tuners)

WP 9 (low level RF)

30 weeks

(test series of 2 weeks)

JRA3 (HIPPI)

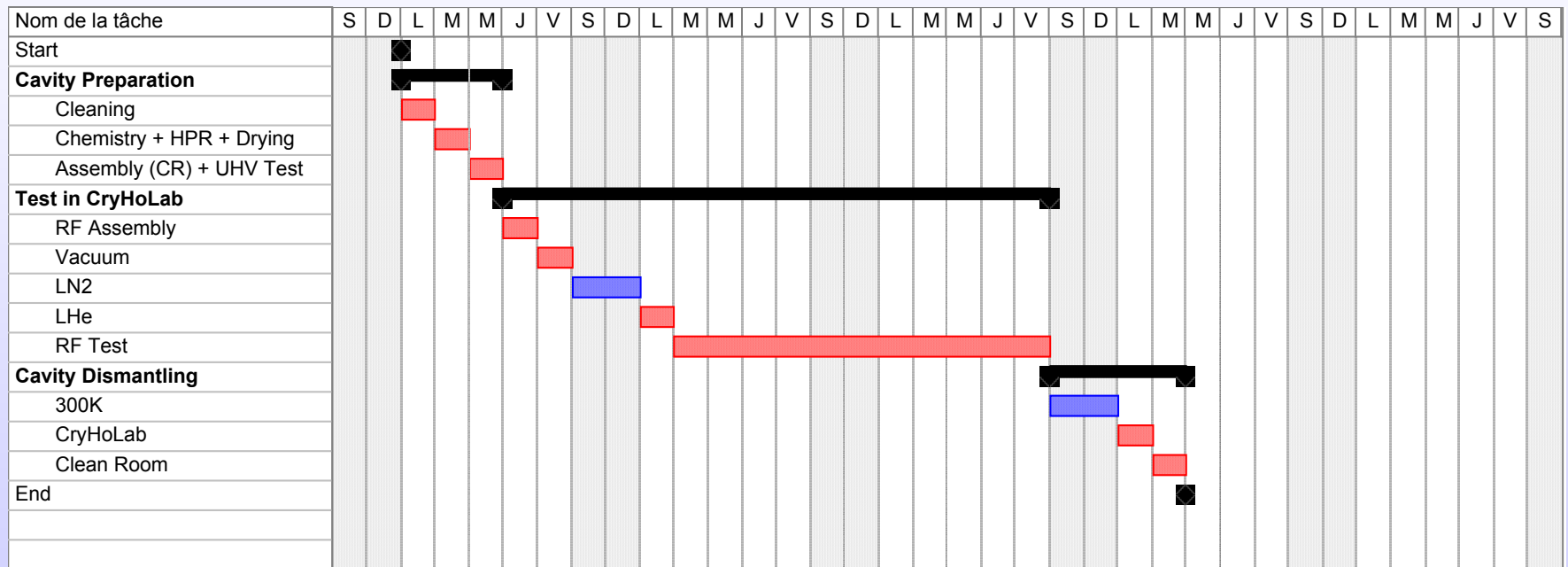
5 cells 700 MHz $\beta = 0.47$

WP 3 (elliptical cavities)

2 cavities – 1 MW pulsed

20 weeks

Typical Test on 2 weeks (LHe)



23 days for cavity handling ⇔ 9 working days for RF test

Milestone - Deliverable

Reports at the end of each test series

Planning (WP8 & WP9)

CryHoLab transfer	:	2004 (T3 →)
1 st series (MS & CEA tuner)	:	2005 (T2 →)
2 st series (IN2P3 activity)	:	2006 (T1 →)
3 rd series (UMI tuner)	:	2007 (T3 →)

Planning for CryHoLab

(T1 & T2 2004)

« Cold Tuning System » (P. Bosland)

motor and mechanism test for S3HC and SOLEIL cavities

useful for SRF/WP8 (CEA tuner)

Proton Cavity (5cells - 700 MHz – $\beta = 0.65$)

performance improvements

useful for HIPPI/WP3 (elliptical cavities)

