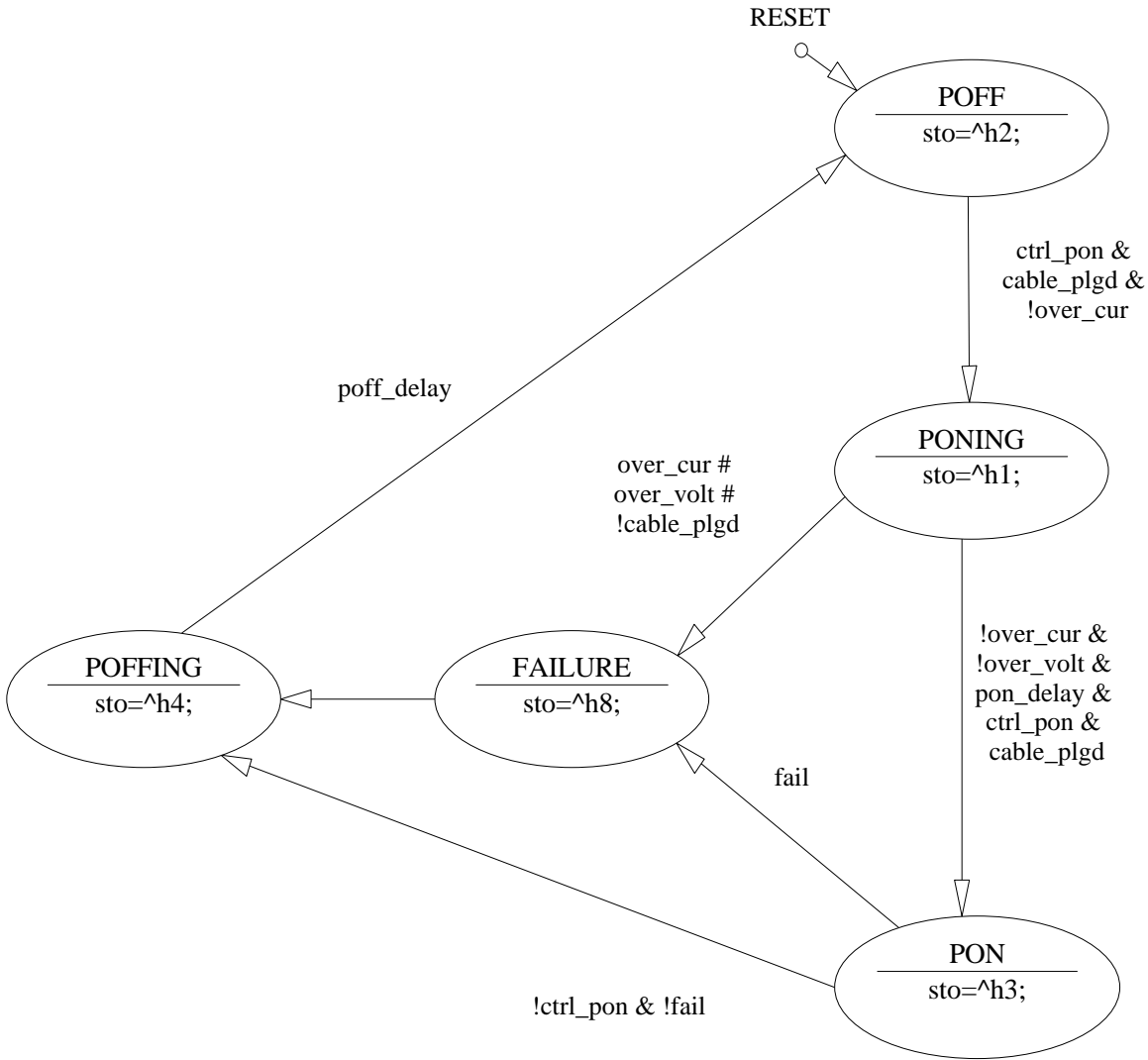


Power on/off control stm
 LAST CHANGE 2005-03-15

sto[] = psw_err ctrl_clr del_aclr pow_on



cur_low := PON & under_cur

cur_high := (PONING # PON) & over_cur

volt_low := PON & under_volt

volt_high := PON & over_volt

un_plgd := !POFF & !cable_plgd

fail = under_volt # over_volt # under_cur # over_cur # !cable_plgd